



# INFINITY ENGINEERING SERVICES



# TABLE OF CONTENTS

1.	COMPANY PROFILE.....	2
2.	MISSION STATEMENT.....	3
3.	INTRODUCTION .....	5
3.1	FIELDS OF SPECIALIZATION .....	5
4.	FIELD SERVICE .....	6
5.	TESTING & COMMISSIONING SERVICES .....	6
6.	MAINTENANCE SERVICES .....	7
6.1	COMPUTERIZED MAINTENANCE MANAGEMENT SYSTEM (CMMS) .....	8
6.2	REPAIRING SHOP .....	8
7.	PROJECT MANAGEMENT SERVICES .....	8
8.	DESIGNING & ENGINEERING SERVICES.....	9
9.	PROJECT REFERENCE LIST .....	9
10.	ORGANISATION CHART .....	12
11.	SERVICE CAPABILITIES .....	13
12.	LIST OF TESTING EQUIPMENTS .....	14
13.	LIST OF EQUIPMENTS & TOOLS.....	15

## 1. COMPANY PROFILE

<b>Company Name:</b>	Infinity Engineering Services
<b>Karachi Office Address:</b>	Al-Shams Centre, 1st Floor Flat No. B-1/39 Block 13 A, Gulshan-E-Iqbal Karachi
<b>Company Address (Workshop):</b>	Plot No 172, Block –13D2, Gulshan-e-Iqbal, (Jamal colony) Karachi
<b>Telephone Nos.:</b>	+9221 -34980622; +9221 -34980633; +92300-2412600; +92333-6381116
<b>Website:</b>	<a href="http://infinityengineering.com.pk">infinityengineering.com.pk</a>
<b>E-mail Address:</b>	<a href="mailto:info@infinityengineering.com.pk">info@infinityengineering.com.pk</a> <a href="mailto:sohailashfaq@infinityengineering.com.pk">sohailashfaq@infinityengineering.com.pk</a> <a href="mailto:sherozesohail@infinityengineering.com.pk">sherozesohail@infinityengineering.com.pk</a> <a href="mailto:faizansohail@infinityengineeringcom.pk">faizansohail@infinityengineeringcom.pk</a>
<b>Management:</b>	Engineer Sohail Ashfaq (Chief Executive Officer) Muhammad Faizan Sohail (Director Finance) Muhammad Sheroze Sohail (Director Marketing)
<b>Firm's Registration No:</b>	2016-17/0421
<b>PEC Registration No:</b>	10901
<b>Electrical Contractor License:</b>	KC-I, No.1668
<b>Firm's NTN No:</b>	7323749-8
<b>Firm's STRN No:</b>	3277876168468
<b>Bank Account:</b>	Bank al Habib LTD

## 2. MISSION STATEMENT

Delivering supreme services, having premium and equal relation with stakeholders. We recruit best for services.

### VISION

To be the world's renowned engineering services providers

### CEO MESSAGE

**Delivering supreme services** is more than just a slogan, it's a way of life for infinity engineering services. Providing state of art services with best business practices. With globally recognized management and engineering professional staff on board. In recognition of our outstanding growth and commitment to quality and safety form our services.

**Engineer Sohail ashfaq**

### DIRECTOR FINANCE MESSAGE

Infinity has also been recognized by the Pakistan and international industry, further cementing our status as a renowned leader in engineering services. Our highly skilled engineering team is constantly engaged to overcome even the most complex business challenges.

**Muhammad Faizan Sohail**

### DIRECTOR SALES & MARKETING MESSAGE

With your continued support and trust, infinity engineering services is now poised to further grow its local and international network. To that end, we appreciate your business support in the workplace and look forward to serving you for decades to come.

**Muhammad Sheroze Sohail**

## OUR VALUE

### INTEGRITY

We constantly demonstrate highest ethical standards in our arrangements. We honor our treaties and are candid in our communications.

### LEADERSHIP

We lead by example and establish an environment of continuous improvement, provide opportunities for people to grow, both personally and professionally. Care and act with compassion.

### RESPECTED FOR INDIVIDUALS

We respect, care and have dignity towards all individuals and worth our diversity as a source of strength.

### CLIENT'S FOCUS

We exceed customer expectation for value and service. We build and maintain customer relationships and ensure long-term satisfaction.

### PERFORMANCE

We strive for continuous improvement in our routine activities, measuring results carefully, and ensuring that integrity and respect for people are never compromised.

### QUALITY

Quality is ingrained in the work of our colleagues and all our values. We have a relentless passion for quality in everything we do.

### TEAM WORK

We believe in collaboration and the limitless possibilities of collective energy. We achieve excellence by putting collective goals ahead of personal interests. We support and encourage open communication and meaningful cooperation among colleagues from varying backgrounds and disciplines.

### INNOVATION

We constantly seek innovative ways to Enhance our services and provide value to our customers. We seek continuous learning by adapting existing knowledge, as well as through research and experimentation, with the full understanding that we learn from our failures as well as our successes.

### 3. INTRODUCTION

Infinity engineering services was founded in Karachi, Pakistan to become the world's leading engineering service provider founded under the vision of Mr. Engineer Sohail Ashfaq.

He graduated from NED University of Engineering and Technology University in Electronics engineering. Further he got training from Siemens Germany. His local & international experience spans on an over 38 years, where he developed a tremendous track record in design, field services and commissioning of electrical, instrumentation, automation and M.E.P systems. All managing staff is experienced work in Pakistan and internationally.

Our core area of services includes detail Engineering & Project Management catalyzed with professional financial on small and large scaled projects of industrial and commercial building development. Moreover, on demand of our Clients, we do also facilitate on designing reviews and design depending on its nature. The primary objective of the company is to enhance the conceptual vision and come up with effective and long lasting technological, cost effective and professional solutions to our Clients. We are keenly looking forward to further transfigure the challenges into opportunities.

#### 3.1 FIELDS OF SPECIALIZATION

We can help you derive the maximum benefit from your electrical installation with experience in:

- High voltage to low voltage power distribution system
- Electrical network supervision and control
- Field instrumentation and control
- Industrial automation and process control
- Electrical system studies
  - Load analysis,
  - Short circuit analysis,
  - Motor starting analysis
  - Protection devices coordination
  - ARC flash analysis
- M.E.P system design, installation and testing
- Computerized Maintenance Management System (CMMS)
- Project management and planning



## 4. FIELD SERVICE

We provide the expert and efficient field services in area of electrical, instrumentation, M.E.P and automation engineering having core areas related to industries, renewable energy and commercial buildings projects utilizing the experienced resources, expert knowledge and creativity to transform vision into reality. Our core strength relies on producing well planned, sustainable, reliable and economical engineering, solutions for field services on projects.

Resources required from a small assignment of 100-man hours to a large Plant requiring 100,000-man hours is available along with all necessary tools and tackles. The job is executed in a systematic way involving all Time and Cost Control methods, resource leveling, scheduling. The S-Curve, Manpower build up, Progress monitoring curves are used to monitor medium and large installation sites. For betterment of our services our estimation department supports for appropriate costing of project.

Sectors in which our field services department is expert in serving:

- Power generation
- Renewable energy
- Solar System
- Grid stations
- Oil and gas
- Petrochemical industries
- Pharmaceutical industries
- Textile industries
- Sugar industries
- Water treatment plant
- Cement Plants
- Commercial building
- Fire Alarm Panel

## 5. TESTING & COMMISSIONING SERVICES

We highly regard the Client's as well as end user's expectations in testing and commissioning facility complying with NEC, IEC, IEEE standards. We consider the provision of electrical testing, M.E.P system testing, instrumentation testing and calibration. to ascertain optimum requirements for end-users.

We are one of the most competent and trained professionals for of testing and commissioning. Having dealt with challenging assignments during the past so many years, we feel quite comfortable in handling such jobs. All the jobs are properly executed according to protocols comply with international standards. For testing services, we use calibrated and certified equipment.

Testing facility that we provide:

### **High and medium voltage**

Protection Relay testing	High pot testing
Isolation resistance testing	Winding resistance
Transformer turn ratio	Capacitance and Dissipation Factor
Oil dielectric test	Checking of interlocks

### **Low voltage**

Power factor testing	Motor Control Centre
Interlocking circuit	Synchronizing Machine
UPS and Battery Chargers	Overhead Cranes
Hard wire control	Variable frequency drives

### **Instrumentation**

Pressure Instrument	Temperature Instrument
Flow Instrument	Wight feeder
Recorders / Analyzers	Density
Chemical properties	Vibration
Measuring Scales testing	Viscosity

### **Mechanical Electrical Plumbing (M.E.P)**

Fire alarm control panel testing	Smoke detector testing
Emergency pumping station system testing	Luminous Testing

## **6. MAINTENANCE SERVICES**

The contracts are most effective in having trouble free operation throughout the year. We will study your Plant drawing and get ourselves familiar with your system. We shall also help you on maintaining critical items in your store. This reduces the down time. You are also our priority client and get immediate attention. We are also available on telephone for consultation / clarification regarding your Plant.



We have standard daily rates for performing different jobs. You just approve these rates and services shall be available on these rates throughout the year as and when required. No need to get into approval business every time. Get the services first on already agreed rates. You can monitor the cost on the day-to-day basis. For technical support, we have dedicated engineering staff for your services.

This package is specially tailored for grid stations, Sugar, Cement Industries and other continuous process units which shut down only once in a year. Avail our special package to have a yearlong dependability of equipment. This service helped to identify the small problems at very early stage before they convert into complicated problems. We study your equipment drawings and prepare and plan ourselves for a detailed maintenance activity.

## **6.1 COMPUTERIZED MAINTENANCE MANAGEMENT SYSTEM (CMMS)**

Performing the appropriate maintenance before this downtime occurs can save a business both time and money. We recognize that assets must perform to meet the operational and business objectives of your organization. The maintenance software solutions offered by us help optimize every aspect of maintenance while improving equipment reliability, enhancing personnel productivity and ensuring material availability. Our system is designed on the foundation of maintenance best practices with a streamlined implementation approach centered on customer success in realizing the total benefits available from the CMMS solution

CMMS solutions that enable enterprises of varying size, sophistication, and industry to optimize the life cycles of their capital assets. Efficient acquisition, maintenance, repairs, replacement or salvaging of these critical assets result in operational excellence, leading to decreased cost and increased profits solution tools that reduce maintenance cost, increase return on assets, and increase workforce and equipment uptime. At the core is the CMMS solution that allows users to configure the system exactly as desired for effectively addressing asset management, workforce management, work order management, preventive maintenance, materials and spares management, and safety.

## **6.2 REPAIRING SHOP**

Industrial Electronic, electrical Repairs is one of our special fields. Our Electronic Cards Repair section is helpful in providing you with the repair facilities at very competitive rates and within a very short time span.

## **7. PROJECT MANAGEMENT SERVICES**

We help and guide our Clients move from concepts to completion based on international standards as described and adapted by Project Management Institute (PMI), International standard origination (ISO). Throughout life cycle of project, we perform extensive design management & subsequent project/construction management. We prepare and execute project management plans, baseline schedules, project S-curves; carefully monitored and

controlled by our dedicated and experienced team. The plans include but not limited to quality, communication, changes, risks, cost, scope, time, till closing of project.

Our supervision team assures quality during execution of project. All policies and procedures are being implemented in conformance with the design and core requirements. We prepare and implement QA/QC forms to ensure the quality.

Project management office (PMO)	Tender documentation
Document Management	Schedule Management
Contract documentation (FADIC)	Cost management
Scope Management	Risk Management
Facilitation	Claim management
Stakeholder management	Quality Management

## 8. DESIGNING & ENGINEERING SERVICES

Designing department offer a multitude of benefits. They help your effective operations, assess performance, provide ease of operation for your staff, improve building comfort, enhance safety, improve efficiency, save energy, and protect your assets.

The term Designing incorporates a wide variety of technologies, which include:

- Process Automation
- Network study
- Protection coordination
- MEP system designing
- Energy audits

Using the analysis from the consultation phase or information that you may provide; the design phase selects the most suitable equipment and provides detailed drawings and technical specifications.

## 9. PROJECT REFERENCE LIST

Our management team members have played key role in the execution of following projects:

### Oil and Gas Projects:

Ghawar Oil Field, Saudi Aramco	Corporate Data Centre in Dharan, Saudi Aramco
Pakistan State Oil, Pipri Marshalling	Jamshoro Joint Venture (LPG Extraction Plant)
National Refinery Limited (Through ATL)	Bosicar Refinery

PSO Pumping station, Zulfiqarabad Oil Terminal

PSO Pumping station, Chakpirana

PSO Pumping station, Habibabad

Sui gas compression station – sui

BE Energy Limited Construction of Thaliam Bulk Oil Terminal Rawalpindi

### Power Generation Project:

Ordinance Factory, Havelian

Sind Alkalies 3.5 MW

Habib sugar Mill 12MW

Ordinance Factory, Sanjawal

Guddu, Combined cycle power plant

K-Electric 28MW Combine cycle power plant

Kot Addu 2 x 100 MW Gas Turbine Power Station

### Cement Plant:

Dadabhoy Cement - Nooriabad

Pakland Cement – Linell

Lucky Cement Line D

Lucky Cement Line F

Lucky Cement Line H

Lucky Cement Basra Iraq Line 3 and 4

Essa Cement- Nooriabad

Lucky Cement Line C

Lucky Cement Line E

Lucky Cement G

Lucky Cement Basra Iraq Line 1 and 2

Lucky Cement Pezu D.I.Khan Line I

### Grid Stations:

Civil Aviation Grid Station for Jinnah Terminal

KPT - M.I. yard - 11 KV network

K.E.S.C. grid stations

### Solar Energy Projects:

Reon Energy 767.880Wp On-grid Solar Solution at GAT Logistics Site Area Karachi

Reon Energy Limited 923,940 Wp on-grid solar solution at Agri Auto HUB Balochistan (Ongoing Project)

Reon Energy Limited 860.01 kWp on-grid solar solution at Soorty Textile Landhi Karachi Unit 11 (Ongoing Project)

Reon Energy Limited 1970.175 kWp on-grid solar solution at Soorty Textile Nooriabad Karachi Unit 19 (Ongoing Project)

Reon Energy Limited 999,000 Wp on-grid solar solution at Agri Auto Stamping Port Qasim Karachi (Ongoing Project)

Reon Energy Limited 2.74 MWp on-grid solar solution at Soorty Textile Landhi Karachi Unit 8 (Ongoing Project)

Reon Energy Limited 693.785 kWp on-grid solar solution at Soorty Textile Nooriabad Karachi Unit 13 (Ongoing Project)

Reon Energy Limited 1124.82 kWp on-grid solar solution at Liberty Textile Site Area Karachi (Ongoing Project)

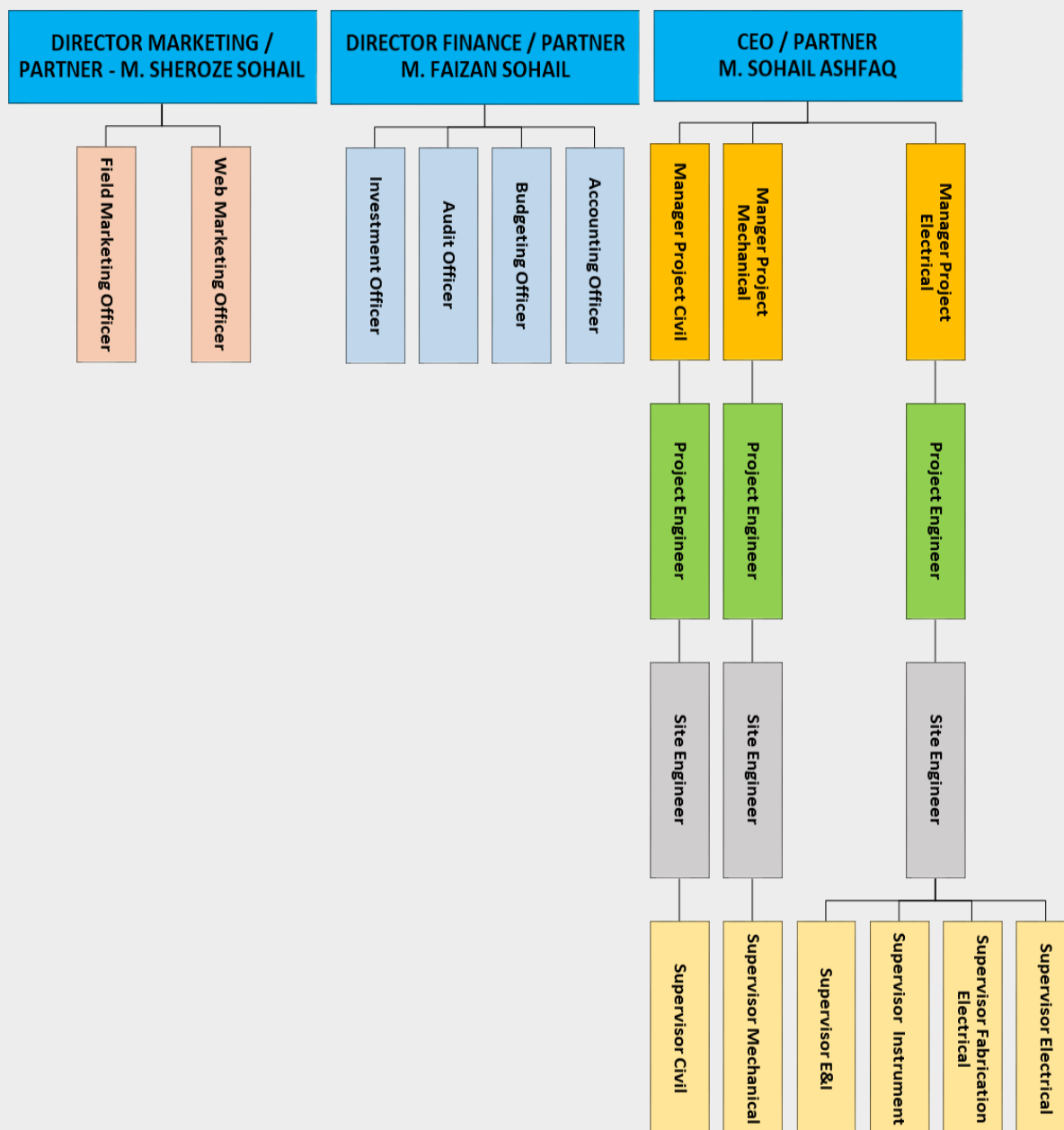
### **Miscellaneous Industrial Projects**

Subhang Sugar Mill, Indonesia

Karachi Fish Harbor

Pak Steel Water & Sewerage Treatment Plant

## 10. ORGANISATION CHART



## 11. SERVICE CAPABILITIES

The permanent employed manpower available at INFINITY Engineering Services is as follows

Number of employees	
Engineers	03
Associate Engineers (Diploma Holder)	09
Foreman / Technicians	15
Skilled Workers	20

Besides the above mentioned the employees (helpers) assisting the main team enrolled for working at a particular project depends on the project requirement.

Pakistan Engineering Council has prequalified INFINITY Engineering in C4 Category amounting to 200 Million. We are capable of executing construction jobs of all range even of very large project.

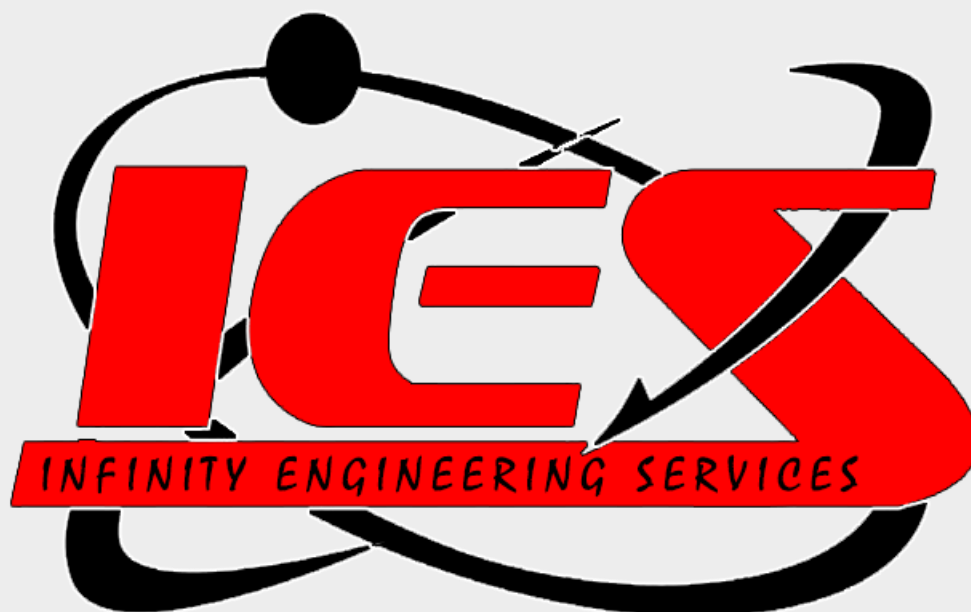
## 12. LIST OF TESTING EQUIPMENTS

S.No	Instruments	Capacity
01	Multimeters	$\mu$ A - mA
02	Earth Resistance Testers	Standard
03	Static Megger	5 KV
	Static Megger	10 KV
	Rotary Megger	5 KV
04	Phase Rotation Meter	Standard
05	Tong Tester Digital	Standard
06	Tong Tester DC	Standard
07	Secondary Injection Set	50 A
	Secondary Injection Set	25 A
08	3 - phase Auto Transformer	10 A, 0-250V
09	1 - phase Auto Transformer	10 A , 0-250 V
10	DC - Power Supply	0 - 48 V
11	Digital Timer	0 - 999 Sec
12	Oscilloscope	100 MHz
	Oscilloscope	10 MHz
13	PT 100 Simulator	0 - 2000 $\Omega$
14	mA - mV Injector	0 - 20 mA , 10V
15	Battery Boxes	0 - 18 V
16	Bridge meter	$\mu\Omega$ -- K $\Omega$
17	Digital Temperature meter	0 - 1600 C
18	Clips, lead, connector	-----
19	Electronic Repair Laboratory	-----
	set up at Karachi Centre.	
20	Process Calibrator	Full Range
21	Digital Test Gauge	Full Range
22	Analog Test Gauge	Full Range
23	Pressure Tester	0-700 Bar
24	Hand Pump	0-100 Bar
25	Walky-talky	-----
26	Logic Probe	-----



## 13. LIST OF EQUIPMENTS & TOOLS

S.No.	Equipment / Tools	Capacity
01	Welding Transformers	50-500 A
02	Welding Transformers	50 - 300 A
03	Drill Machines	2000 W
04	Drill Machines	1000 W
05	Drill Machines	800 W
06	Drill Machines	650 W
07	Electric Grinders	2500 W
08	Electric Grinders	2500 W
09	Baby Grinders	500 W
10	Baby Grinders	500 W
11	Angle Cutters	2500 W
12	Angle Cutters	2500 W
13	Gas Welding Set	Various
14	Chain Blocks	05 Tons
15	Working Tables with Bench vice/	----
16	Bus bar bender (Hydraulic)	Upto 12 mm
17	Pipe Bender (Hydraulic)	Upto 3 "
18	Circular Pipe Cutter	Upto 2 "
19	Spot Welding Machine	Upto 2 mm
20	Power Hacksaw	18" blade
21	Pipe Scaffolding	9 m (height)
22	Aluminum Ladders	4 m
23	Aluminum Ladders	2 m
24	Cable Jacks	15 Tons
25	Cable Rollers	Upto 500 mm
26	Hydraulic Crimping Plier	Upto 300 mm
27	Mechanical Crimping Plier	Upto 185 mm
28	Mechanical Cable Cutter	Upto 120 mm
29	Electrician Tool Boxes	Various
30	Fitter Tool Boxes	Various
31	Switchgear Tool Boxes	Various
32	Sleeves Punch Plier	Upto 10mm
33	Motorized Cable Pulling Winches	
34	Hot Air Gun	1500 Watt



## **Fully Responsible for Your Job**

We provide the expert and efficient field services in area of electrical, instrumentation, M.E.P and automation engineering having core areas related to industries, renewable energy and commercial buildings projects utilizing the experienced resources, expert knowledge and creativity to transform vision into reality. Our core strength relies on producing well-planned, sustainable, reliable and economical engineering solutions for field services on projects.